



Guide

START AND STOP

Magnet Commands for Transmitters

All Thelma Biotel transmitters utilize a magnet key sequence to ensure a safe start and stop of acoustic transmitters. Transmitters are stored and shipped in sleep mode to preserve battery power. Start and stop is achieved by touching the transmitter with a magnet in a specific sequence while the transmitter is in the immediate vicinity of a receiver.



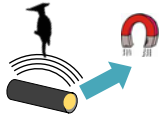
STARTING A TRANSMITTER



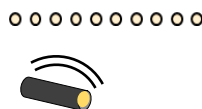
Hold the transmitter close to the hydrophone.



Put magnet on transmitter.



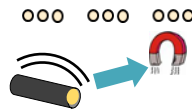
Remove magnet during the rapid 'woodpecker' sequence.



Keep the magnet away from the transmitter during the slow 10 pings sequence.



Bring magnet back within 3 seconds.



Remove magnet during 3x3 ping confirmation signal:
 "good-mor-ning"
 "good-mor-ning"
 "good-mor-ning"



The transmitter has started and is ready for deployment. ID will be transmitted immediately as verification.

NOTE: Keep started tags several meters away from the receiver to avoid acoustic interference.

When a magnet is briefly touched to a running transmitter it will respond with a single ping, followed by a transmit.

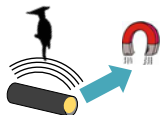
STOPPING A TRANSMITTER



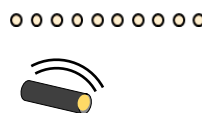
Hold the transmitter close to the hydrophone.



Put magnet on transmitter.



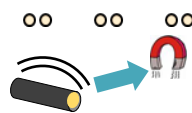
Remove magnet during the rapid 'woodpecker' sequence.



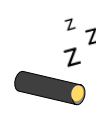
Keep the magnet away from the transmitter during the slow 10 pings sequence.



Bring magnet back within 3 seconds.



Remove magnet during 3x2 ping confirmation signal
 "good-night"
 "good-night"
 "good-night"



The transmitter has stopped and has entered deep sleep.

Should the start or stop sequence fail, please wait a few seconds before trying again.